

RCA proline

Range of application:

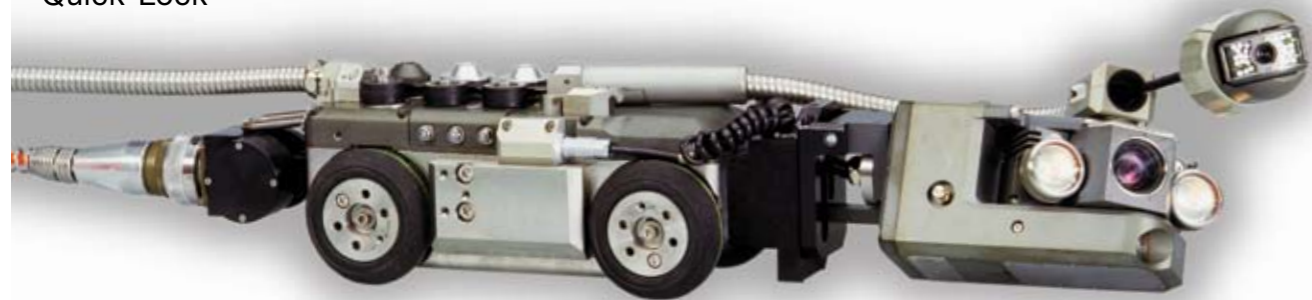
- CCTV-inspection of pipes using camera tractor or push-rod camera
- TWO-in-ONE: When combined with the **SAT-Star** camera system, the *RCA proline* shows its biggest advantage: main line and lateral can now be inspected simultaneously in only one run
- With our optional kit you can modify the **Sat-Star** tractor to carry a hose for flushing laterals
- Pressure testing of joints, reaches, manholes, lateral connections, rehabilitated areas (requires additional equipment)

The *RCA proline* control system can be upgraded with the following main features:

- Automated program runs for positioning and inspection tasks (control macros)
- Temperature and inclination measurements
- ScanCam for measuring pipe deformation and diameter; 3-D monitoring
- Accurate damage assessment via laser measuring system
- Ex-proof version for zone 1 and 2

The *RCA proline* can be combined with:

- SAT 35 with alpha_hasp
- SAT 60 with alpha_hasp
- KS 60 with alpha_hasp
- L 100 with KS 100
- L 150 with KS 150
- L 500 with KS 200
- SAT 200 with SK 200Z and KS 60
- KAMPAC
- Quick-Lock



Rausch CCTV Inspection Systems

RCA proline



The *RCA proline* is the most advanced professional TV-control system on the market - our innovative technology will take your CCTV-inspection to a new level!
 This unique system can control all RAUSCH tractors and cameras, suitable for pipe diameters ranging from 100 mm (4") up to 1600 mm (64")! Capable of handling up to 450m (1300 ft) cable length!
 Modular components – easily upgradeable! Ergonomical design! Digital Technology!

PC Pentium Computer Technology, industrial grade

- Big screen TFT monitor for simultaneous display of two independent video sources; i.e. monitoring the satellite system and the rear view camera
- Parallel video recording on digital (optional) or analog data recording devices
- Data fade-in unit
- Control macros available
- Application software WINKANAL
- Digitizing of pictures and tapes, DVD (all optional)
- System for measuring cracks and other damages (optional)
- Software service
- Inkjet printer

Main Monitor

- 14" monitor, high resolution
- Display of actual distance measurements of main and satellite camera (optional)
- Actual status of travel distance, tape run time, date, time, camera position, photo number
- Inclination (optional)

Digital video recorder Como (MPEG 1 / MPEG 2) alternatively analog video recording



- Control Unit**
- compact 19" rack system with temperature controlled fan speed
 - Multi processor system with serial bus technology for minimizing cabling requirements
 - Low voltage system (SELV), galvanically separated power circuits
 - Easily upgradeable
 - Integrated fade-in unit
 - Automatic illumination adjustment
 - Sensor controlled reverse-run-automatic, synchronized cable spooling in SAT mode

Power Supply

- Battery powered: 24 maintenance free single cells (275Ah/48V) in gel technology, temperature controlled charge cycles for maximum life span; fully operational of up to 9 hours/day at 60% battery discharge; stand-by-parallel operation possible

Alternative:

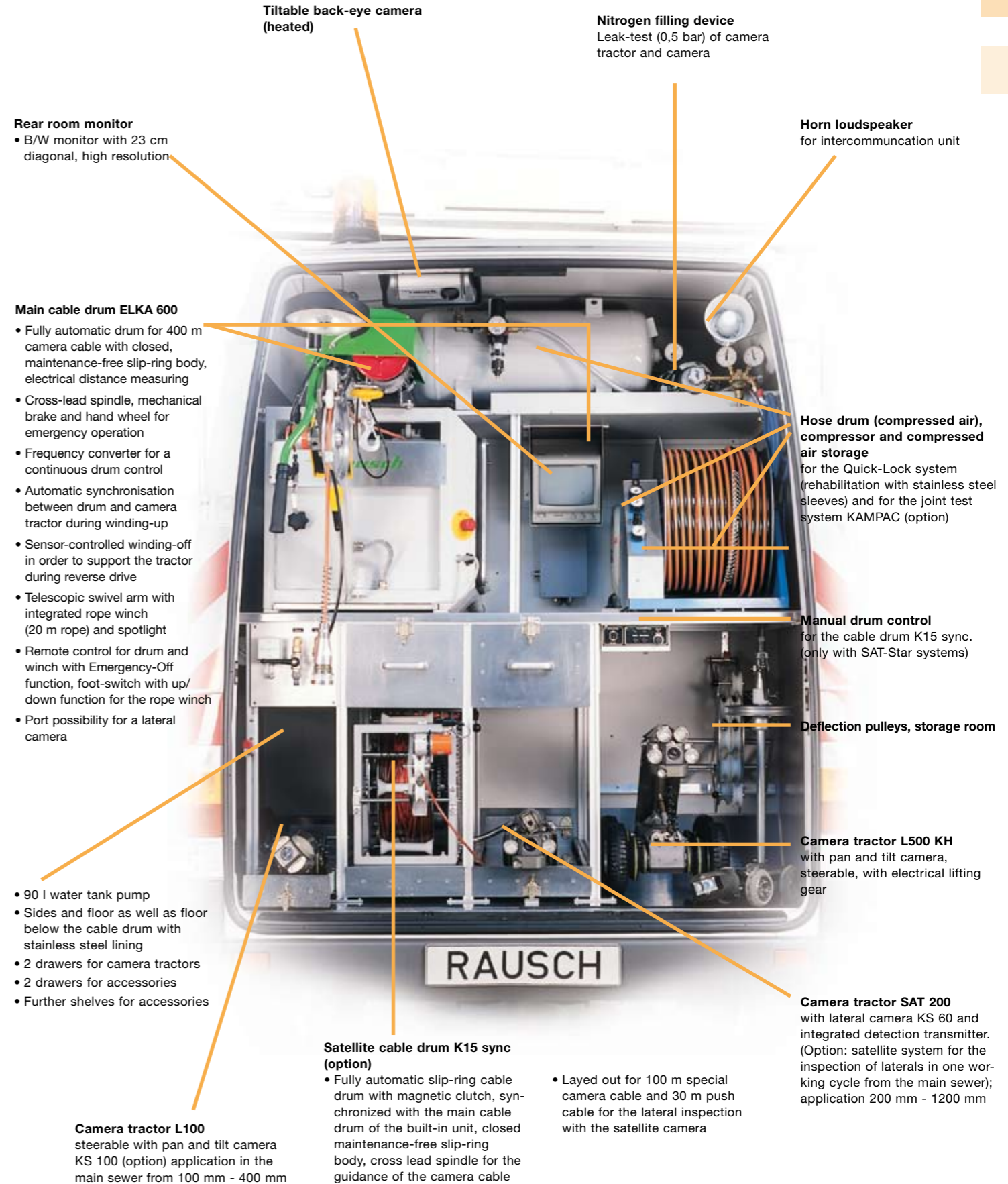
- 1-phase Power Generator: 2-6KW output (gas or gasoline); remote control optional

Operating Panel, Keyboards

- Robust, dirt resistant keyboard foil with integrated buttons
- Graphics capable LCD display for visualizing system modes, multilingual
- 2-axis joy sticks with expanded functions for camera and tractor operation; ergonomically positioned with keyboard

The *RCA proline* is the flagship of our product line. With its multiple upgrades and combination options, this control system was specifically designed to handle all RAUSCH tractors and cameras!

The following picture shows the rear room of a fully equipped Mercedes Sprinter Van.



Tilttable back-eye camera (heated)

Nitrogen filling device
Leak-test (0,5 bar) of camera tractor and camera

Horn loudspeaker
for intercommunication unit

Rear room monitor
• B/W monitor with 23 cm diagonal, high resolution

Main cable drum ELKA 600

- Fully automatic drum for 400 m camera cable with closed, maintenance-free slip-ring body, electrical distance measuring
- Cross-lead spindle, mechanical brake and hand wheel for emergency operation
- Frequency converter for a continuous drum control
- Automatic synchronisation between drum and camera tractor during winding-up
- Sensor-controlled winding-off in order to support the tractor during reverse drive
- Telescopic swivel arm with integrated rope winch (20 m rope) and spotlight
- Remote control for drum and winch with Emergency-Off function, foot-switch with up/down function for the rope winch
- Port possibility for a lateral camera

Hose drum (compressed air), compressor and compressed air storage
for the Quick-Lock system (rehabilitation with stainless steel sleeves) and for the joint test system KAMPAC (option)

Manual drum control
for the cable drum K15 sync. (only with SAT-Star systems)

Deflection pulleys, storage room

Camera tractor L500 KH
with pan and tilt camera, steerable, with electrical lifting gear

- 90 l water tank pump
- Sides and floor as well as floor below the cable drum with stainless steel lining
- 2 drawers for camera tractors
- 2 drawers for accessories
- Further shelves for accessories

Satellite cable drum K15 sync (option)

- Fully automatic slip-ring cable drum with magnetic clutch, synchronized with the main cable drum of the built-in unit, closed maintenance-free slip-ring body, cross lead spindle for the guidance of the camera cable

- Layed out for 100 m special camera cable and 30 m push cable for the lateral inspection with the satellite camera

Camera tractor L100

- steerable with pan and tilt camera KS 100 (option) application in the main sewer from 100 mm - 400 mm

Camera tractor SAT 200
with lateral camera KS 60 and integrated detection transmitter. (Option: satellite system for the inspection of laterals in one working cycle from the main sewer); application 200 mm - 1200 mm